

THE NORTHBANK

DISCOVER THE ESSENCE OF BALANCE

3-STOREY
DOUBLE FRONTAGE
SHOP OFFICE

Envision · Embrace · Embark



Artist's impression

The NorthBank's emerging business hub embarks on another integrative transformation grandeur, where practicality and leisure reflections are the two main dynamics at the heart of the development of the 49 units, 3-storey Double Frontage Shop Offices.

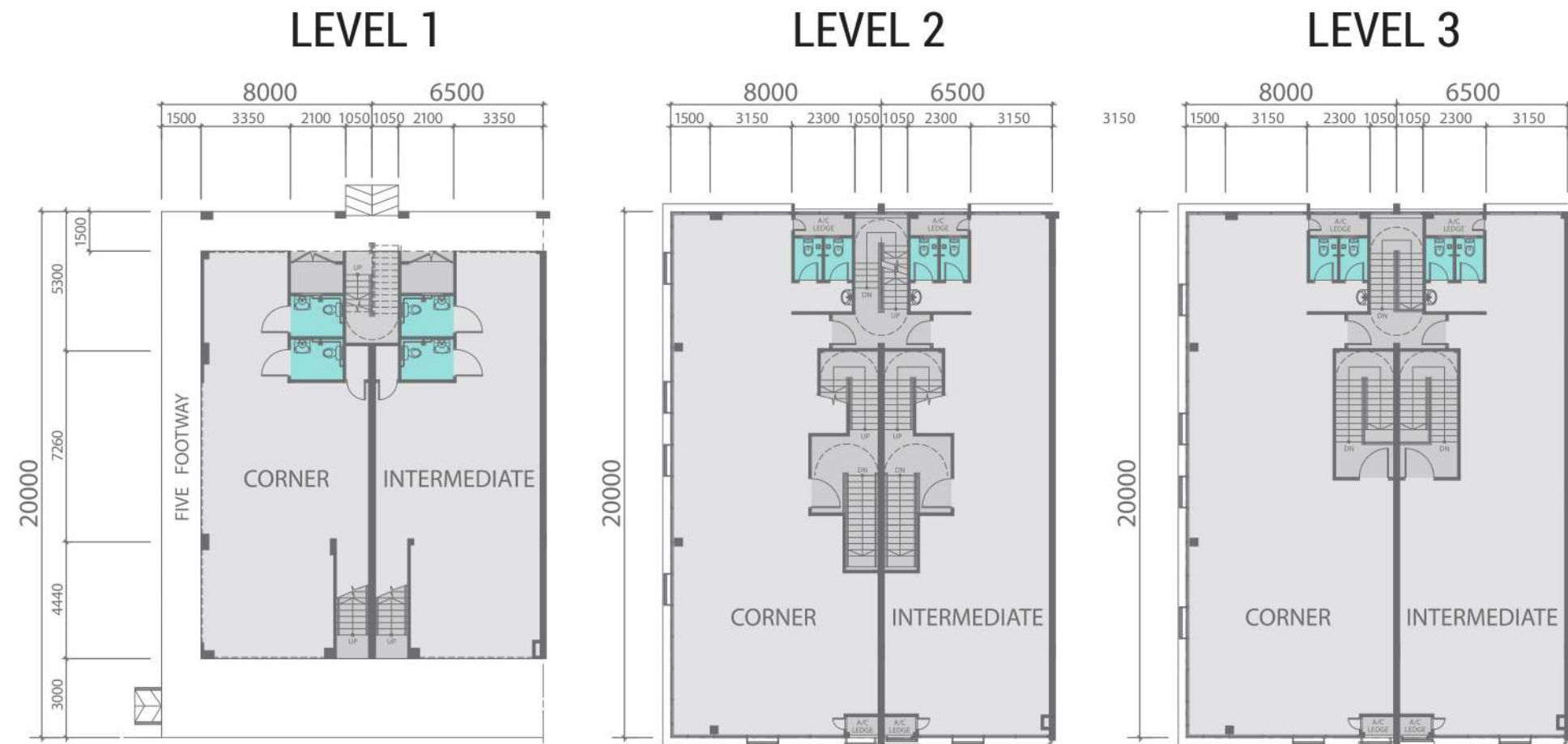
Seamless accessibilities ease the high traffic flow encircling the vicinity, boosting the comfort of working, shopping and socialising, all under the same roof. Stopover at the first TeaLive Drive-thru in Sarawak, enhancing the appeal and investment appreciation to potential purchasers, or take advantage of the spacious event zone catering to the needs of the retailers and shoppers.

The new hot spot business hub is the heartbeat of the future, a destination for the young and the vibrant.

PRACTICALITY & LEISURE



TYPICAL FLOOR PLAN



WALLED UP AREA: Corner from 4,516 sqft | Intermediate from 3,870 sqft

SITE PLAN

49 | 3-STOREY
UNITS | DOUBLE FRONTAGE
SHOP OFFICE

LEGEND

- Typical Intermediate From 3,870 sqft
- Typical Corner From 4,516 sqft
- Extra-large Intermediate From 4,174 sqft
- Extra-large Corner From 5,697 sqft





SPECIFICATIONS

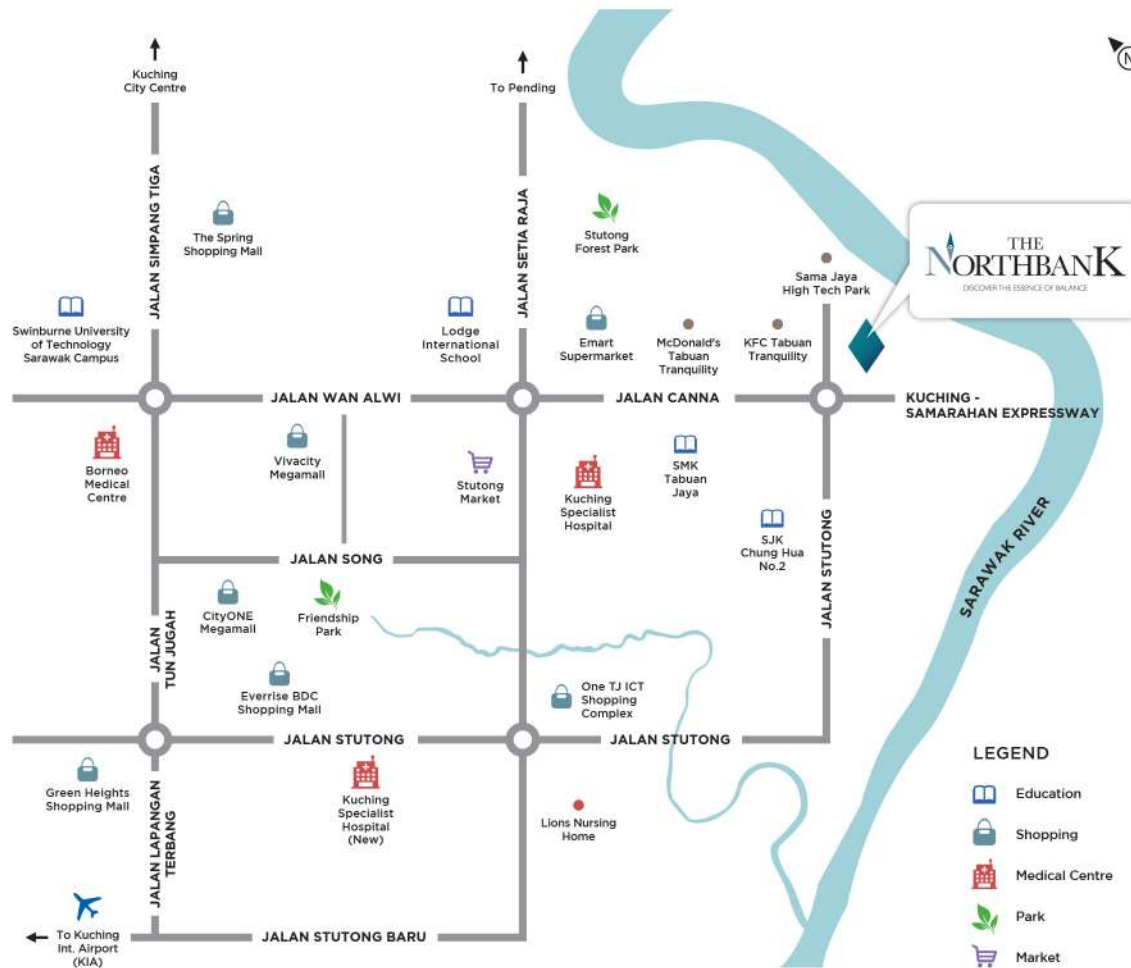
STRUCTURE	• Reinforced concrete framework & clay brick wall
ROOF	• Metal Roofing
CEILING	• Reinforced Concrete Slab Ceiling for Level 1 and 2 • Level 3 – Plaster ceiling • Toilets – Moisture Resistance ceiling
WINDOWS	• Aluminum-framed glass windows
DOORS	• Aluminum roller shutter to Level 1, shop front, rear and side where applicable • Fire rated main door to Level 2 and Level 3 • Timber flush doors to toilets & storage room where applicable
FLOOR FINISHES	• Cement Render to all areas except toilets • Quality Floor Tiles to Five Foot Way, Front Staircase, Toilets & Pre-toilets area
WALL FINISHES	• Ceramic wall tiles for toilets • Weather Shield Paint to external walls • Emulsion Paint to internal walls
PLUMBING	• Concealed plumbing, water closet and wash basin
ELECTRICAL	• Generally concealed wiring, switches and socket points
STAIRCASE RAILING	• Painted mild steel railing

Integrating simplicity and vibrancy, the design of The NorthBank shop offices is inspired by the Industrialised Architectural concept, utilising modest yet contemporary building materials to reflect the elements of functional practicality flowing through the building structure. Assimilating elements of convenience with personalised choices, and encompassing a modernistic, spacious concept, these 49 shop offices provide the luxury of seamless opportunities to purchasers.



Artist's impression

LOCATION MAP



Interested to know more about The NorthBank? Get in touch with us!



IBRACO BERHAD
[197101000730 (011286-P)]

No.6 The NorthBank
Off Kuching-Samarahan Expressway
93350 Kuching, Sarawak.
T: **082-361 111** F: **082-362 233**
E: **sales@ibraco.com**

www.the-northbank.com

   Ibraco Berhad

SPA Approval No. P/1D/202-16

Whilst every reasonable care has been taken in preparing this brochure, the Developer shall not be held responsible for any inaccuracy in its contents. All statements are believed to be correct but are not relied on as a representation of fact. Renderings, digital images and illustrations are artist's impression only and cannot be regarded as representations of facts. All plans, internal layouts, information and specifications are subject to change and shall not form a part of an offer or contract. The Developer reserves the right to modify any part or parts of the building, housing project, development and/or any unit prior to completion as directed by the building authorities. All plans are subject to amendments as required by the Developer's architect, engineers and/or appropriate building authorities.