

RENNA  
RESIDENCE

*The Finest Flow of Life*

## TREASURE

### UNIQUE RESIDENCE IN KUCHING

- Centralised Location
- Close to Airport
- Within 123-acre Mixed Development
- High Investment Potential
- Next to Tunku Putra-HELP International School

## PLEASURE

### UNRIVALLED PRIVILEGES

- Convenient Access
- Safeguarded Enclave
- Multi-tier Security
- Inspired Architecture
- Riverside Boardwalk

## LEISURE

### UNIQUE LIVING EXPERIENCES

- Resort-themed Living
- Lush Sky Gardens
- Fine Collection of Facilities
- Versatile Home Layouts



*Live in  
Perfect Harmony*

## UNIQUE RESIDENCE IN KUCHING



Artist's Impression only



**RENNA**  
RESIDENCE  
@ THE NORTHBANK

- LEGEND**
- Education
  - Shopping
  - Medical Centre
  - Park
  - Market

## An Alluring Address

THE NEW PULSE OF KUCHING



### LIVE CENTRALLY

MINUTES TO ALL REGIONS OF  
KUCHING CITY CENTRE

Renna Residence is well-positioned in close proximity to the Kuching city centre, and thereby conveniently located to all of the city's most frequented destinations.

### FLY WITH EASE

DIRECT FLIGHTS TO LOCAL &  
INTERNATIONAL CITIES

A mere 10-minute drive will take you to the Kuching International Airport, which offers great convenience in airborne travel, whether within or beyond national borders.

### STAY CONNECTED

GREAT CONNECTIVITY VIA  
MAJOR ROADS

Get around with ease via a well-planned network of roads that conveniently and effectively covers all of Kuching's points of interest.

### ENJOY CONVENIENCE

SURROUNDED BY  
LIFESTYLE AMENITIES

Gain great accessibility to a host of life-enriching amenities, such as education institutions, medical centres, shopping malls, dining outlets, community markets, community parks and many more.

PLEASE SUBSCRIBE



Artist's Impression only

## The Warmest of Welcomes

A LIVING DESTINATION



Renna Residence welcomes you to Kuching's premier apartment, integrating fine dwelling with a collection of commercial offerings. The residence offers low density living and well-crafted spaces, as can be observed in the architecture from afar, as well as from the very moment you pass through its lofty, naturally ventilated lobby.

UNRIVALLED  
PRIVILEGES



Artist's Impression only



*Indulge yourself at  
a resort-themed residence,  
close to the vibrant metropolis.*

Immerse yourself in the soothing, resort-like ambiance of Renna Residence. The ground floor facilities are designed to have a most relaxed atmosphere, which is further enhanced by the boardwalk promenade along the river in front of the apartment complex.



*Artist's Impression only*

RIVERFRONT BOARDWALK



*Artist's Impression only*

PLAYGROUND

*A Place to  
Pamper  
Your Senses*



*Artist's Impression only*

SWIMMING POOL

# Enriched Living At Every Corner

At Renna Residence, there is something for everyone to enjoy. Its collection of resident facilities brilliantly caters to all generations. Whether it's lounging by the pool, working up a sweat at the gym, or hosting jovial barbecue parties, one thing is assured; life is never dull at Renna Residence.



**Legend**  
 ■ Future Development  
 ■ Riverbank Boardwalk  
 ■ Cycle & Pedestrian Path

**THE NORTHBANK**  
 DISCOVER THE ESSENCE OF BALANCE

## SITE PLAN



- Legend**
- |                         |                                |  |                      |                                    |                  |  |
|-------------------------|--------------------------------|--|----------------------|------------------------------------|------------------|--|
| 1 Swimming Pool         | 5 BBQ Pit                      | 9 Theatre Room   | 13 Management Office | 17 Break Out Space                 | 21 Guardhouse    | 25 Bin Centre  |
| 2 Kid's Pool            | 6 Function Room                | 10 Gymnasium   | 14 Changing Room     | 18 Entrance Lobby                  | 22 Main Entrance | 26 Bicycle Parking   |
| 3 Pool Deck             | 7 Pantry                       | 11 Yoga / Dance Studio                                 | 15 Lift Lobby        | 19 Drop-off Area                   | 23 Exit Way      | 27 Riverfront Boardwalk                                    |
| 4 Children's Playground | 8 Entertainment / Karaoke Room | 12 Kid's Indoor Playground / Chill Zone / Reading Area | 16 Water Feature     | 20 Electrical Car Charging Station | 24 Car Wash Bay  | 28 Covered Car Parks (Multi-storey Car Park @ Level 2 & 3) |



Artist's Impression only

*Serenity*  
Elevated to  
New Heights



Little lush pockets of tranquility can be found at the sky gardens, which are located on five different levels - tastefully offering additional chill-out areas and aesthetic to the overall living concept at Renna Residence.



## True Tranquility *With An Urban Twist*

FAMILY-ORIENTED RIVERSIDE RESIDENCE



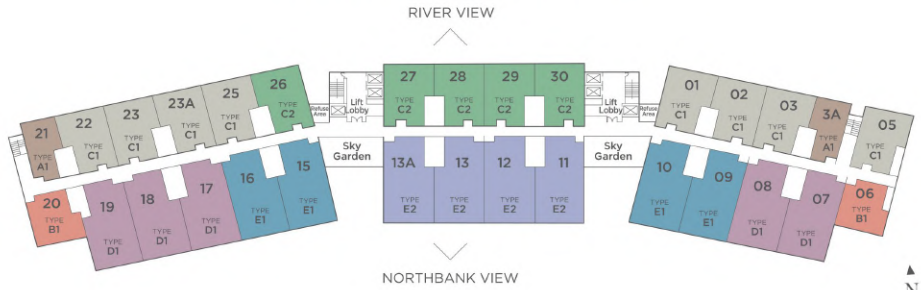
The North-South orientation of Renna Residence homes allows you to truly savour the river and parkland views. The spacious balconies of certain units can be fashioned as outdoor rooms, further extending the value and utility of your home, where the limits are only bound by your imaginations.



# Unit Identification Plan

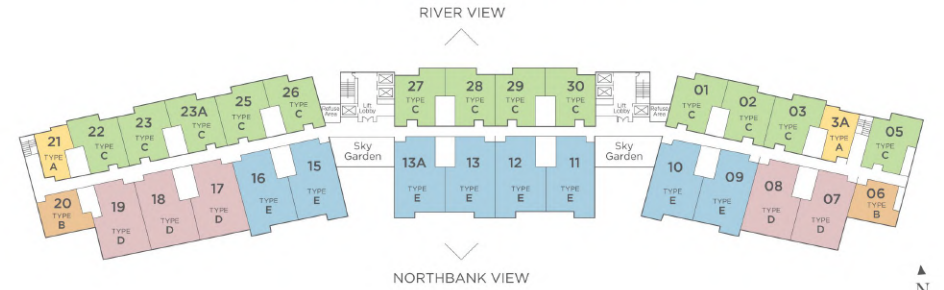


TYPICAL KEY PLAN LEVEL 3A



\*Sky Garden only applicable at L3A, L6, L8, L10 & L12

TYPICAL KEY PLAN LEVEL 5 - 12



\*Sky Garden only applicable at L3A, L6, L8, L10 & L12

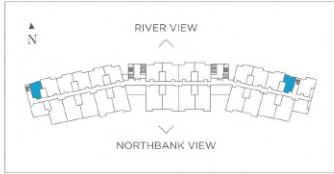
	RIVER VIEW										NORTHBANK VIEW										RIVER VIEW									
TYPE	C / C1		A / A1		C / C1		B / B1		D / D1		E / E1 / E2		D / D1		B / B1		A / A1		C / C1 / C2											
L13	13-01 787 ft <sup>2</sup> 2 Rooms	13-02 787 ft <sup>2</sup> 2 Rooms	13-03 787 ft <sup>2</sup> 2 Rooms	13-3A 505 ft <sup>2</sup> Studio	13-05 787 ft <sup>2</sup> 2 Rooms	13-06 587 ft <sup>2</sup> 1+1 Rooms	13-07 1,086 ft <sup>2</sup> 3 Rooms	13-08 1,086 ft <sup>2</sup> 3 Rooms	13-09 1,136 ft <sup>2</sup> Dual-Key	13-10 1,136 ft <sup>2</sup> Dual-Key	13-11 1,136 ft <sup>2</sup> Dual-Key	13-12 1,136 ft <sup>2</sup> Dual-Key	13-13 1,136 ft <sup>2</sup> Dual-Key	13-13A 1,136 ft <sup>2</sup> Dual-Key	13-15 1,136 ft <sup>2</sup> Dual-Key	13-16 1,136 ft <sup>2</sup> Dual-Key	13-17 1,086 ft <sup>2</sup> 3 Rooms	13-18 1,086 ft <sup>2</sup> 3 Rooms	13-19 1,086 ft <sup>2</sup> 3 Rooms	13-20 587 ft <sup>2</sup> 1+1 Rooms	13-21 505 ft <sup>2</sup> Studio	13-22 787 ft <sup>2</sup> 2 Rooms	13-23 787 ft <sup>2</sup> 2 Rooms	13-23A 787 ft <sup>2</sup> 2 Rooms	13-25 787 ft <sup>2</sup> 2 Rooms	13-26 787 ft <sup>2</sup> 2 Rooms				
L12	12-01 787 ft <sup>2</sup> 2 Rooms	12-02 787 ft <sup>2</sup> 2 Rooms	12-03 787 ft <sup>2</sup> 2 Rooms	12-3A 505 ft <sup>2</sup> Studio	12-05 787 ft <sup>2</sup> 2 Rooms	12-06 587 ft <sup>2</sup> 1+1 Rooms	12-07 1,086 ft <sup>2</sup> 3 Rooms	12-08 1,086 ft <sup>2</sup> 3 Rooms	12-09 1,136 ft <sup>2</sup> Dual-Key	12-10 1,136 ft <sup>2</sup> Dual-Key	12-11 1,136 ft <sup>2</sup> Dual-Key	12-12 1,136 ft <sup>2</sup> Dual-Key	12-13 1,136 ft <sup>2</sup> Dual-Key	12-13A 1,136 ft <sup>2</sup> Dual-Key	12-15 1,136 ft <sup>2</sup> Dual-Key	12-16 1,136 ft <sup>2</sup> Dual-Key	12-17 1,086 ft <sup>2</sup> 3 Rooms	12-18 1,086 ft <sup>2</sup> 3 Rooms	12-19 1,086 ft <sup>2</sup> 3 Rooms	12-20 587 ft <sup>2</sup> 1+1 Rooms	12-21 505 ft <sup>2</sup> Studio	12-22 787 ft <sup>2</sup> 2 Rooms	12-23 787 ft <sup>2</sup> 2 Rooms	12-23A 787 ft <sup>2</sup> 2 Rooms	12-25 787 ft <sup>2</sup> 2 Rooms	12-26 787 ft <sup>2</sup> 2 Rooms	12-27 787 ft <sup>2</sup> 2 Rooms	12-28 787 ft <sup>2</sup> 2 Rooms	12-29 787 ft <sup>2</sup> 2 Rooms	12-30 787 ft <sup>2</sup> 2 Rooms
L11	11-01 787 ft <sup>2</sup> 2 Rooms	11-02 787 ft <sup>2</sup> 2 Rooms	11-03 787 ft <sup>2</sup> 2 Rooms	11-3A 505 ft <sup>2</sup> Studio	11-05 787 ft <sup>2</sup> 2 Rooms	11-06 587 ft <sup>2</sup> 1+1 Rooms	11-07 1,086 ft <sup>2</sup> 3 Rooms	11-08 1,086 ft <sup>2</sup> 3 Rooms	11-09 1,136 ft <sup>2</sup> Dual-Key	11-10 1,136 ft <sup>2</sup> Dual-Key	11-11 1,136 ft <sup>2</sup> Dual-Key	11-12 1,136 ft <sup>2</sup> Dual-Key	11-13 1,136 ft <sup>2</sup> Dual-Key	11-13A 1,136 ft <sup>2</sup> Dual-Key	11-15 1,136 ft <sup>2</sup> Dual-Key	11-16 1,136 ft <sup>2</sup> Dual-Key	11-17 1,086 ft <sup>2</sup> 3 Rooms	11-18 1,086 ft <sup>2</sup> 3 Rooms	11-19 1,086 ft <sup>2</sup> 3 Rooms	11-20 587 ft <sup>2</sup> 1+1 Rooms	11-21 505 ft <sup>2</sup> Studio	11-22 787 ft <sup>2</sup> 2 Rooms	11-23 787 ft <sup>2</sup> 2 Rooms	11-23A 787 ft <sup>2</sup> 2 Rooms	11-25 787 ft <sup>2</sup> 2 Rooms	11-26 787 ft <sup>2</sup> 2 Rooms	11-27 787 ft <sup>2</sup> 2 Rooms	11-28 787 ft <sup>2</sup> 2 Rooms	11-29 787 ft <sup>2</sup> 2 Rooms	11-30 787 ft <sup>2</sup> 2 Rooms
L10	10-01 787 ft <sup>2</sup> 2 Rooms	10-02 787 ft <sup>2</sup> 2 Rooms	10-03 787 ft <sup>2</sup> 2 Rooms	10-3A 505 ft <sup>2</sup> Studio	10-05 787 ft <sup>2</sup> 2 Rooms	10-06 587 ft <sup>2</sup> 1+1 Rooms	10-07 1,086 ft <sup>2</sup> 3 Rooms	10-08 1,086 ft <sup>2</sup> 3 Rooms	10-09 1,136 ft <sup>2</sup> Dual-Key	10-10 1,136 ft <sup>2</sup> Dual-Key	10-11 1,136 ft <sup>2</sup> Dual-Key	10-12 1,136 ft <sup>2</sup> Dual-Key	10-13 1,136 ft <sup>2</sup> Dual-Key	10-13A 1,136 ft <sup>2</sup> Dual-Key	10-15 1,136 ft <sup>2</sup> Dual-Key	10-16 1,136 ft <sup>2</sup> Dual-Key	10-17 1,086 ft <sup>2</sup> 3 Rooms	10-18 1,086 ft <sup>2</sup> 3 Rooms	10-19 1,086 ft <sup>2</sup> 3 Rooms	10-20 587 ft <sup>2</sup> 1+1 Rooms	10-21 505 ft <sup>2</sup> Studio	10-22 787 ft <sup>2</sup> 2 Rooms	10-23 787 ft <sup>2</sup> 2 Rooms	10-23A 787 ft <sup>2</sup> 2 Rooms	10-25 787 ft <sup>2</sup> 2 Rooms	10-26 787 ft <sup>2</sup> 2 Rooms	10-27 787 ft <sup>2</sup> 2 Rooms	10-28 787 ft <sup>2</sup> 2 Rooms	10-29 787 ft <sup>2</sup> 2 Rooms	10-30 787 ft <sup>2</sup> 2 Rooms
L9	9-01 787 ft <sup>2</sup> 2 Rooms	9-02 787 ft <sup>2</sup> 2 Rooms	9-03 787 ft <sup>2</sup> 2 Rooms	9-3A 505 ft <sup>2</sup> Studio	9-05 787 ft <sup>2</sup> 2 Rooms	9-06 587 ft <sup>2</sup> 1+1 Rooms	9-07 1,086 ft <sup>2</sup> 3 Rooms	9-08 1,086 ft <sup>2</sup> 3 Rooms	9-09 1,136 ft <sup>2</sup> Dual-Key	9-10 1,136 ft <sup>2</sup> Dual-Key	9-11 1,136 ft <sup>2</sup> Dual-Key	9-12 1,136 ft <sup>2</sup> Dual-Key	9-13 1,136 ft <sup>2</sup> Dual-Key	9-13A 1,136 ft <sup>2</sup> Dual-Key	9-15 1,136 ft <sup>2</sup> Dual-Key	9-16 1,136 ft <sup>2</sup> Dual-Key	9-17 1,086 ft <sup>2</sup> 3 Rooms	9-18 1,086 ft <sup>2</sup> 3 Rooms	9-19 1,086 ft <sup>2</sup> 3 Rooms	9-20 587 ft <sup>2</sup> 1+1 Rooms	9-21 505 ft <sup>2</sup> Studio	9-22 787 ft <sup>2</sup> 2 Rooms	9-23 787 ft <sup>2</sup> 2 Rooms	9-23A 787 ft <sup>2</sup> 2 Rooms	9-25 787 ft <sup>2</sup> 2 Rooms	9-26 787 ft <sup>2</sup> 2 Rooms	9-27 787 ft <sup>2</sup> 2 Rooms	9-28 787 ft <sup>2</sup> 2 Rooms	9-29 787 ft <sup>2</sup> 2 Rooms	9-30 787 ft <sup>2</sup> 2 Rooms
L8	8-01 787 ft <sup>2</sup> 2 Rooms	8-02 787 ft <sup>2</sup> 2 Rooms	8-03 787 ft <sup>2</sup> 2 Rooms	8-3A 505 ft <sup>2</sup> Studio	8-05 787 ft <sup>2</sup> 2 Rooms	8-06 587 ft <sup>2</sup> 1+1 Rooms	8-07 1,086 ft <sup>2</sup> 3 Rooms	8-08 1,086 ft <sup>2</sup> 3 Rooms	8-09 1,136 ft <sup>2</sup> Dual-Key	8-10 1,136 ft <sup>2</sup> Dual-Key	8-11 1,136 ft <sup>2</sup> Dual-Key	8-12 1,136 ft <sup>2</sup> Dual-Key	8-13 1,136 ft <sup>2</sup> Dual-Key	8-13A 1,136 ft <sup>2</sup> Dual-Key	8-15 1,136 ft <sup>2</sup> Dual-Key	8-16 1,136 ft <sup>2</sup> Dual-Key	8-17 1,086 ft <sup>2</sup> 3 Rooms	8-18 1,086 ft <sup>2</sup> 3 Rooms	8-19 1,086 ft <sup>2</sup> 3 Rooms	8-20 587 ft <sup>2</sup> 1+1 Rooms	8-21 505 ft <sup>2</sup> Studio	8-22 787 ft <sup>2</sup> 2 Rooms	8-23 787 ft <sup>2</sup> 2 Rooms	8-23A 787 ft <sup>2</sup> 2 Rooms	8-25 787 ft <sup>2</sup> 2 Rooms	8-26 787 ft <sup>2</sup> 2 Rooms	8-27 787 ft <sup>2</sup> 2 Rooms	8-28 787 ft <sup>2</sup> 2 Rooms	8-29 787 ft <sup>2</sup> 2 Rooms	8-30 787 ft <sup>2</sup> 2 Rooms
L7	7-01 787 ft <sup>2</sup> 2 Rooms	7-02 787 ft <sup>2</sup> 2 Rooms	7-03 787 ft <sup>2</sup> 2 Rooms	7-3A 505 ft <sup>2</sup> Studio	7-05 787 ft <sup>2</sup> 2 Rooms	7-06 587 ft <sup>2</sup> 1+1 Rooms	7-07 1,086 ft <sup>2</sup> 3 Rooms	7-08 1,086 ft <sup>2</sup> 3 Rooms	7-09 1,136 ft <sup>2</sup> Dual-Key	7-10 1,136 ft <sup>2</sup> Dual-Key	7-11 1,136 ft <sup>2</sup> Dual-Key	7-12 1,136 ft <sup>2</sup> Dual-Key	7-13 1,136 ft <sup>2</sup> Dual-Key	7-13A 1,136 ft <sup>2</sup> Dual-Key	7-15 1,136 ft <sup>2</sup> Dual-Key	7-16 1,136 ft <sup>2</sup> Dual-Key	7-17 1,086 ft <sup>2</sup> 3 Rooms	7-18 1,086 ft <sup>2</sup> 3 Rooms	7-19 1,086 ft <sup>2</sup> 3 Rooms	7-20 587 ft <sup>2</sup> 1+1 Rooms	7-21 505 ft <sup>2</sup> Studio	7-22 787 ft <sup>2</sup> 2 Rooms	7-23 787 ft <sup>2</sup> 2 Rooms	7-23A 787 ft <sup>2</sup> 2 Rooms	7-25 787 ft <sup>2</sup> 2 Rooms	7-26 787 ft <sup>2</sup> 2 Rooms	7-27 787 ft <sup>2</sup> 2 Rooms	7-28 787 ft <sup>2</sup> 2 Rooms	7-29 787 ft <sup>2</sup> 2 Rooms	7-30 787 ft <sup>2</sup> 2 Rooms
L6	6-01 787 ft <sup>2</sup> 2 Rooms	6-02 787 ft <sup>2</sup> 2 Rooms	6-03 787 ft <sup>2</sup> 2 Rooms	6-3A 505 ft <sup>2</sup> Studio	6-05 787 ft <sup>2</sup> 2 Rooms	6-06 587 ft <sup>2</sup> 1+1 Rooms	6-07 1,086 ft <sup>2</sup> 3 Rooms	6-08 1,086 ft <sup>2</sup> 3 Rooms	6-09 1,136 ft <sup>2</sup> Dual-Key	6-10 1,136 ft <sup>2</sup> Dual-Key	6-11 1,136 ft <sup>2</sup> Dual-Key	6-12 1,136 ft <sup>2</sup> Dual-Key	6-13 1,136 ft <sup>2</sup> Dual-Key	6-13A 1,136 ft <sup>2</sup> Dual-Key	6-15 1,136 ft <sup>2</sup> Dual-Key	6-16 1,136 ft <sup>2</sup> Dual-Key	6-17 1,086 ft <sup>2</sup> 3 Rooms	6-18 1,086 ft <sup>2</sup> 3 Rooms	6-19 1,086 ft <sup>2</sup> 3 Rooms	6-20 587 ft <sup>2</sup> 1+1 Rooms	6-21 505 ft <sup>2</sup> Studio	6-22 787 ft <sup>2</sup> 2 Rooms	6-23 787 ft <sup>2</sup> 2 Rooms	6-23A 787 ft <sup>2</sup> 2 Rooms	6-25 787 ft <sup>2</sup> 2 Rooms	6-26 787 ft <sup>2</sup> 2 Rooms	6-27 787 ft <sup>2</sup> 2 Rooms	6-28 787 ft <sup>2</sup> 2 Rooms	6-29 787 ft <sup>2</sup> 2 Rooms	6-30 787 ft <sup>2</sup> 2 Rooms
L5	5-01 787 ft <sup>2</sup> 2 Rooms	5-02 787 ft <sup>2</sup> 2 Rooms	5-03 787 ft <sup>2</sup> 2 Rooms	5-3A 505 ft <sup>2</sup> Studio	5-05 787 ft <sup>2</sup> 2 Rooms	5-06 587 ft <sup>2</sup> 1+1 Rooms	5-07 1,086 ft <sup>2</sup> 3 Rooms	5-08 1,086 ft <sup>2</sup> 3 Rooms	5-09 1,136 ft <sup>2</sup> Dual-Key	5-10 1,136 ft <sup>2</sup> Dual-Key	5-11 1,136 ft <sup>2</sup> Dual-Key	5-12 1,136 ft <sup>2</sup> Dual-Key	5-13 1,136 ft <sup>2</sup> Dual-Key	5-13A 1,136 ft <sup>2</sup> Dual-Key	5-15 1,136 ft <sup>2</sup> Dual-Key	5-16 1,136 ft <sup>2</sup> Dual-Key	5-17 1,086 ft <sup>2</sup> 3 Rooms	5-18 1,086 ft <sup>2</sup> 3 Rooms	5-19 1,086 ft <sup>2</sup> 3 Rooms	5-20 587 ft <sup>2</sup> 1+1 Rooms	5-21 505 ft <sup>2</sup> Studio	5-22 787 ft <sup>2</sup> 2 Rooms	5-23 787 ft <sup>2</sup> 2 Rooms	5-23A 787 ft <sup>2</sup> 2 Rooms	5-25 787 ft <sup>2</sup> 2 Rooms	5-26 787 ft <sup>2</sup> 2 Rooms	5-27 787 ft <sup>2</sup> 2 Rooms	5-28 787 ft <sup>2</sup> 2 Rooms	5-29 787 ft <sup>2</sup> 2 Rooms	5-30 787 ft <sup>2</sup> 2 Rooms
L3A	3A-01 968 ft <sup>2</sup> 2 Rooms	3A-02 968 ft <sup>2</sup> 2 Rooms	3A-03 968 ft <sup>2</sup> 2 Rooms	3A-3A 1,444 ft <sup>2</sup> Studio	3A-05 968 ft <sup>2</sup> 2 Rooms	3A-06 836 ft <sup>2</sup> 1+1 Rooms	3A-07 1,529 ft <sup>2</sup> 3 Rooms	3A-08 1,529 ft <sup>2</sup> 3 Rooms	3A-09 1,533 ft <sup>2</sup> Dual-Key	3A-10 1,533 ft <sup>2</sup> Dual-Key	3A-11 1,444 ft <sup>2</sup> Dual-Key	3A-12 1,444 ft <sup>2</sup> Dual-Key	3A-13 1,444 ft <sup>2</sup> Dual-Key	3A-13A 1,444 ft <sup>2</sup> Dual-Key	3A-15 1,533 ft <sup>2</sup> Dual-Key	3A-16 1,533 ft <sup>2</sup> Dual-Key	3A-17 1,529 ft <sup>2</sup> 3 Rooms	3A-18 1,529 ft <sup>2</sup> 3 Rooms	3A-19 1,529 ft <sup>2</sup> 3 Rooms	3A-20 836 ft <sup>2</sup> 1+1 Rooms	3A-21 667 ft <sup>2</sup> Studio	3A-22 968 ft <sup>2</sup> 2 Rooms	3A-23 968 ft <sup>2</sup> 2 Rooms	3A-23A 968 ft <sup>2</sup> 2 Rooms	3A-25 968 ft <sup>2</sup> 2 Rooms	3A-26 943 ft <sup>2</sup> 2 Rooms	3A-27 943 ft <sup>2</sup> 2 Rooms	3A-28 943 ft <sup>2</sup> 2 Rooms	3A-29 943 ft <sup>2</sup> 2 Rooms	3A-30 943 ft <sup>2</sup> 2 Rooms
L3	Carpark										Carpark																			
L2	Carpark										Carpark																			
L1	Facilities & Carpark										Facilities & Carpark																			

\*Dual-Key (Studio + 2 Bedrooms)

## Type A / A1

505 sq.ft. / 667 sq.ft.

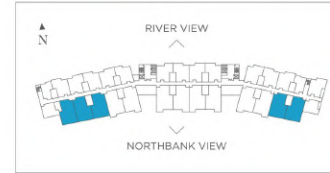
STUDIO



## Type D / D1

1,086 sq.ft. / 1,529 sq.ft.

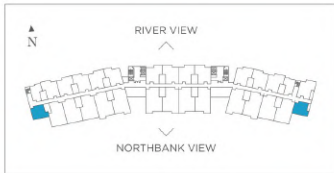
3 BEDROOMS  
3 BATHROOMS



## Type B / B1

587 sq.ft. / 836 sq.ft.

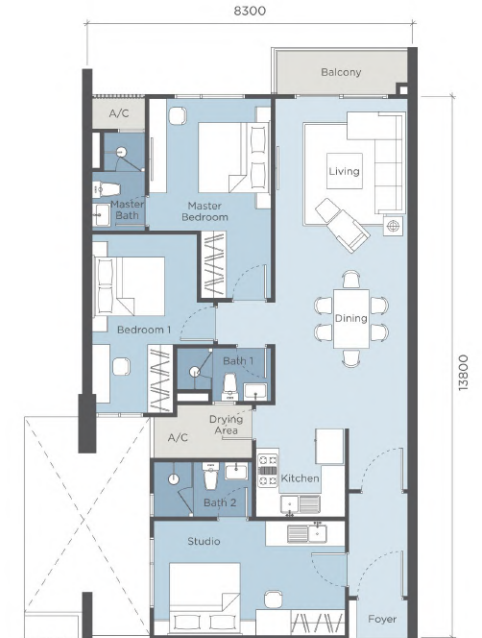
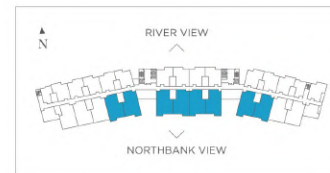
1 + 1 BEDROOMS  
1 BATHROOM



## Type E / E1 / E2

1,136 sq.ft. / 1,533 sq.ft. / 1,444 sq.ft.

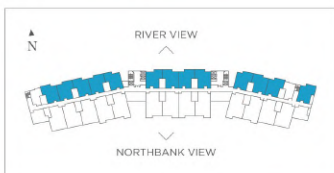
STUDIO +  
2 BEDROOMS



## Type C / C1 / C2

787 sq.ft. / 968 sq.ft. / 943 sq.ft.

2 BEDROOMS  
2 BATHROOMS



# Specifications




<b>STRUCTURE</b>	Reinforced concrete frameworks
<b>ROOF</b>	Selected metal sheet roof (Main Roof)
<b>WALL</b>	Brickwall
<b>DOORS</b>	
Main Entrance	Timber door with quality lockset
Others	Timber flush door with quality lockset
Glazed door	Aluminium framed with glass
<b>WINDOWS</b>	
All	Aluminium framed window
<b>FLOORS FINISHES</b>	
Entrance Foyer	Tiles
Living / Dining	Tiles
Kitchen	Tiles
Drying Area / Balcony	Tiles
Bedrooms / Room	Polymer composite floor
All Bathrooms	Tiles
<b>WALL FINISHES</b>	
External	Plaster and paint
Internal	Plaster and paint
Bathrooms & Kitchen	Tiles up to ceiling height
<b>CEILING FINISHES</b>	
Living / Dining / Kitchen / Bedrooms	Plasterboard
Bathrooms	Moisture resistant board

<https://the-northbank.com/projects/renna-residence>



**Ibraco Berhad**  
No. 6, The NorthBank  
Off Kuching-Samarahan Expressway  
93350 Kuching, Sarawak.  
F +60 82 362 233 E sales@ibraco.com

FOR MORE INFORMATION  
+60 82 361 111  
 The NorthBank Kuching



Disclaimer: Whilst every reasonable care has been taken in preparing this brochure, the Developer shall not held responsible for any inaccuracy in its contents. All statements are believed to be correct but are not relied on as a representation of fact. Renderings, digital images and illustrations are artist's impression only and cannot be regarded as representations of facts. All plans, internal layouts, information and specifications are subject to change and shall not form a part of an offer or contract. The Developer reserves the right to modify any parts of the building, housing project, development and/or any unit prior to completion as directed by the building authorities. All plans are subject to amendments as required by Developer's architect, engineers and/or appropriate building authorities.

Property Name : Renna Residence • Approval Authority for Building Plan : MBKS • SPA Approval No. : P/1D/116-20 • Project Address : Block 9 (Survey Lot 3829), In Part of Lot 2975 (Part of Survey Lot 3146) Block 12, Muara Tebas Land District, Off Kuching-Samarahan Expressway, Kuching • Expected Date of Completion : 48 months from the date of SPA • Land Tenure : 60 years • Type A : 18 units • Type A1 : 2 units • Type B : 18 units • Type B1 : 2 units • Type C : 113 units • Type C1 : 8 units • Type C2 : 5 units • Type D : 45 units • Type D1 : 5 units • Type E : 72 units • Type E1 : 4 units • Type E2 : 4 units • Total Units : 296 units • Housing Developer's License No. : L0016/KP/HD/01/2021/0006 • Validity Period : 22.03.2021 - 01.03.2025 • Advertisement & Sales Permit No. : P0029/KP/HD/01/2021/0013 • Validity Period : 27.05.2021 - 01.03.2025 • Approved Building Plan No. : 36/2020 • Min Price : RM 325,300.00 • Max Price : RM 812,141.00